

**WHEATLAND  
ELECTRIC**  
Delivering Energy for Life

**WHEATLAND  
ELECTRIC COOPERATIVE**

**NEWS**

## Wheatland Electric Cooperative, Inc.

Bruce Mueller—General Manager

### Board of Trustees

**Wes  
Campbell**  
President

**Dave Lowe**  
Vice President

**Patrick Riley**  
Secretary

**Woody  
Barnes**  
Treasurer

**Ron Davis**  
President Emeritus

**Charles Ayers**  
Trustee

**Dan Bonine**  
Trustee

**Vic Case**  
Trustee

**Katie  
Eisenhour**  
Trustee

**Bob Hiss**  
Trustee

**Lawrence  
Houston**  
Trustee

**Roe Johnson**  
Trustee

### District Offices

**Garden City**  
2005 W Fulton  
P.O. Box 973  
Garden City, KS  
67846  
620-275-0261

**Great Bend**  
2300 Broadway  
P.O. Box 1446  
Great Bend, KS  
67530  
620-793-4223

**Harper**  
302 W. 6th  
P.O. Box 247  
Harper, KS 67058  
620-896-7090

**Leoti**  
N Hwy 25  
P.O. Box 966  
Leoti, KS 67861  
620-375-2632

**Scott City—Main**  
101 Main Street  
P.O. Box 230  
Scott City, KS  
67871  
620-872-5885

**Syracuse**  
206 1/2 N Main  
P.O. Box 1010  
Syracuse, KS  
67878  
620-384-5171

**Tribune**  
310 Broadway  
P.O. Box 490  
Tribune, KS 67879  
620-376-4231

### FROM THE MANAGER

## Wheatland Board Will Meet to Discuss Rates in December

As I discussed in last month's article, Wheatland Electric Cooperative has engaged C.H. Guernsey to prepare a study on the costs of providing electric service and the rates Wheatland charges for its service. The preliminary results of the study show a need to slightly increase our base rates by approximately 7 percent.

Raising rates is never a popular decision, as no one wants higher electric bills. However, without some adjustment, Wheatland cannot continue to provide the level of reliable service that you, the members, expect and deserve.

The Board of Trustees and management are sensitive to and concerned about increasing your electric rates and the best way to go about doing so. By now, you should have received a notification in the mail about a meeting in which the Board of Trustees will be discussing rates. The meeting will be held on Tuesday, December 15, 2015, at 11 a.m. at the

Wheatland Broadband office (Bryan Center), 416 S. Main in Scott City. The portion of this meeting where rates are discussed is open to all members who wish to attend.

I also wanted to take this opportunity to thank our members for their generosity over the past two months. The "Cram the Van" food drive events were a huge success. Much needed food was donated by you to help feed our friends and neighbors this holiday season. Because of you and the Wheatland employees and trustees who worked hard to make this happen, Christmas will be better for many families in our communities.

Lastly, in this month's local pages you will see a Merry Christmas and Happy New Year greeting from all the Wheatland employees (including the Water and Broadband divisions) and Board of Trustees. We hope that you have a wonderful holiday season. Merry Christmas!

**Until next time, take care.**



Bruce Mueller

### Notice of Meeting of Board of Trustees to Discuss Rate Change

Wheatland Electric's Board of Trustees will hold a meeting in which rates will be discussed and voted on at the December board meeting.

The meeting will be held at 11 a.m., on Tuesday, December 15, 2015, at the following location:

**BRYAN CONFERENCE CENTER  
416 S MAIN  
SCOTT CITY, KS 67871**

The rate proposal section of this meeting is open to all members of Wheatland Electric.



General Manager & Trustees



Executive Team—Scott City



District 1—Scott City



District 2—Leoti



District 3—Tribune



District 4—Syracuse

W I S H I N G  
A N D Y O U R I

HAPPY H

FROM ALL OF US AT W

MERRY CE  
HAPPY N





Accounting Department—Garden City



Wheatland Broadband—Scott City

WANTING TO BRING YOU  
AND YOUR LOVED ONES

# HOLIDAYS

WHEATLAND ELECTRIC

# CHRISTMAS and NEW YEAR



Water Division—Garden City



District 7—Harper



District 5—Garden City



District 6—Great Bend

# Cram the Van Collects 3.5 T

Wheatland recently completed our second annual “Cram the Van” food drive, collecting 7,081 pounds of food for hungry people across Kansas. That’s more than **THREE TONS OF FOOD**, and a total of nearly seven tons in the past two years.

The food donations collected this year are enough by some calculations to keep a single food bank stocked for nearly three months. The effort also brought in \$1,142.80 in cash donations. Every donation collected in a particular community stayed in that community to benefit its local food bank.

“Cram the Van” lasted two months and featured 11 stops in 10 different communities throughout



Wheatland and Conway Springs High School teamed up to collect 820 lbs. of food and \$1,032.80 for their local food bank.

Wheatland’s territory. Wheatland also collected donations at its seven offices and two other drop off points in Conway Springs and Caldwell.

The drive featured a big red van, covered in bright “Cram the Van” decals, which Wheatland brought to various community events. Wheatland challenged our members to help “Cram the Van” with non-perishable food items for the local food bank and you responded in force!

“Last year’s event was a tremendous success and greatly exceeded our expectations,” said Shawn Powelson, Manager of Member Services for Wheatland. “With the incredible participation and support for the program last year, we knew we wanted to do it again this year. Every food bank we visit, when we make the deliveries, is very appreciative of the support and awareness from the ‘Cram the Van’ drive. Add in the fact that we’re quickly approaching the holidays and a time of increased demand on the food banks, and this really is a great help

to them.”

At most “Cram the Van” events, Wheatland served a meal and, in exchange, its members “paid” in the form of canned goods and cash donations. “Cram the Van” events varied from cooking hamburgers at home football games to grilling hot dogs in front of community grocery stores to a Halloween Finale complete with two food slides, pumpkin decorating, marshmallow roasting, hayrack rides, a pumpkin seed spitting contest and a free meal. Using the food slides, kids were able to drop their donations down the slide and directly into the van.

Wheatland General Manager, Bruce Mueller, was pleased with the results of the drive. “Food banks are an



Wheatland’s Tribune office delivers 820-pounds of food and \$60 to the Greeley County Food Bank.

## “Cram the Van” By the Numbers

- ▶ Scott City – 1,680 lbs
- ▶ Leoti – 760 lbs and \$50
- ▶ Tribune – 820 lbs and \$60
- ▶ Finney County – 560 lbs
- ▶ Syracuse – 560 lbs
- ▶ Great Bend – 601 lbs
- ▶ Conway Springs – 820 lbs and \$1,032.80
- ▶ Harper – 780 lbs
- ▶ Caldwell – 500 lbs

**>3.5 TONS**



# ONS of Donations

important part of the communities we serve and offer vitally needed services to our members," Mueller said. "We are proud to be a part of this great program and look forward to continuing to support the communities we serve through programs like this in the future. Thank you to all of our members, employees and trustees for their efforts in this year's food drive."



Wheatland General Manager Bruce Mueller (far left) and staff drop off 1,680-pounds of donations at Hope's Closet, the local food bank in Scott City.



Wheatland employee Neil O'Connell helps a youngster drop his donation down the food slide and into the van at the Halloween Finale in Scott City.



Kelly Burch (left), Wheatland Area-Wide Supervisor in Leoti, presents Gary Salmons and the Wichita County Food Bank with 760-pounds of donations and \$50.



Mission Mart Food Bank volunteer Lloyd Parker prepares to sort the 780-pounds of donations. Parker was more than thankful for the timely arrival of the big red van. Prior to the van's arrival, and just days before their annual Mission Mart Thanksgiving distribution, the shelves and tables were nearly bare.

## Get to Know Your Co-op Staff

### Alli Conine

Member Services Representative  
11 months at Wheatland

#### TELL US ABOUT YOUR FAMILY.

My husband, Zach, is a Territory Manager for Zoetis Animal Health. We have one daughter, Harper, she was born February 18. She has brought so much joy and happiness to our lives!



Alli Conine

#### WHERE ARE YOU FROM ORIGINALLY?

Great Bend

#### WHAT DO YOU LIKE TO DO IN YOUR SPARE TIME?

I love to bake, I can't wait until Harper is old enough to be in the kitchen baking with me! Conine Livestock takes up the majority of our "spare" time. We raise show cattle and show pigs. I learned a long time ago that if I wanted to spend time with Zach, I had better get used to checking cows or fixing fence. Harper already loves being in the barn!

#### WHAT SPORT OR TEAM IS YOUR FAVORITE?

K-State football. I grew up going to every game and that continued while I was in school there. It's always fun to go back now for a game or two!

#### WHAT HAS BEEN YOUR FAVORITE VACATION?

Zach and I have been to San Diego twice, and we've loved it both times. The Gaslamp Quarter has a great night life, our favorite piano bar is there! We've also enjoyed the Del Mar Race Track. Horse racing is such a rush!

#### IF YOU COULD HAVE ANY SUPER POWER

—WHAT WOULD IT BE AND WHY? If I could slow time down, I would. Everyone always tells you that time just flies by and I never believed them until I had Harper. The past 10 months have gone so fast! It's a reminder to live each day to the fullest.

#### WHAT IS SOMETHING NOT MANY PEOPLE KNOW ABOUT YOU?

I would love to be a vet! I can handle anything with animals, but when it comes to humans I have a weak stomach. I was pulling pigs when I was nine months pregnant earlier this year! Zach only wishes I were a vet so we could save money on our vet bill.

# Attention High School



Each year, students from Kansas join more than 1,700 youth in Washington, D.C., to attend the Electric Cooperative Youth Tour. Next year's Youth Tour is scheduled for June 9-16.



Essie Ratzlaff (left) and Derian Garrison enjoy the view at the Jefferson Memorial during Youth Tour in June.

## Don't Miss These Leadership Experiences

Wheatland Electric will select three students to take an all-expense-paid trip in the summer of 2016.

Two winners will be chosen to join over 1,700 young people in Washington, D.C., for the Electric Cooperative Youth Tour. Delegates will fly to our nation's capital to tour important historical sites, learn about our nation's government, and to develop their leadership skills. To see what's in store check-out this video <http://bit.ly/dcytvideo2015>.

One winner will be chosen to attend the Cooperative Youth Leadership Camp in Steamboat Springs, CO. Campers will stay at the scenic Glen Eden Resort in the beautiful Rocky Mountains. At camp, he or she will join winners from other cooperatives in Kansas, Colorado, Oklahoma and Wyoming to form one of the most outstanding leadership camps in the country.

**The people that I spent the week with were just great people. I think the chaperones were amazing and they are very inspirational. It is amazing how much effort they have put into this trip.** **DERIAN GARRISON, 2015 DC PARTICIPANT**

## Scan these Codes to Get More Information

Washington, D.C.



Steamboat Springs, CO



Mallory Horton enjoys the view of the Rockies during the Cooperative Youth Leadership Camp in July.



# hool Juniors

This camp not only highlights the co-op's commitment to their communities, but it also helps teach the students to become community leaders.

**SHAWN POWELSON, YOUTH TOUR COORDINATOR**

As part of the week-long adventure, the students established a candy cooperative business, toured Fish Creek Falls, Trapper Mine, Craig Power Plant; visited Steamboat Springs; experienced the adrenaline rush of river rafting; and enjoyed traditional camp activities, such as volleyball, swimming, dancing, and competing in a talent show. Get more information at <http://bit.ly/CYLCVideo>.

Both trips are funded entirely by Wheatland Electric Cooperative. All you need is spending money for

souvenirs and a desire to have a great leadership experience.

The winners will gain knowledge and experience that will help them grow as they pursue their future career. For more information or to apply, contact your guidance counselor at one of these participating high schools: Argonia, Caldwell, Chaparral, Conway Springs, Deerfield, Great Bend, Greeley County, Holcomb, Norwich, Scott Community, South Haven, Syracuse or Wichita County. Children of

Wheatland employees are not eligible to apply.

**APPLICATIONS ARE DUE BY FEBRUARY 1, 2016.**

Camp made me realize that to become the best person I can be, I have to build better relationships with those around me and trust people...

**MALLORY HORTON, 2015 CAMPER**



Kansas delegates attend Cooperative Youth Leadership Camp along with students from three other states to develop leadership skills and learn about cooperatives. The 2016 camp will be July 16-22.

## WHEATLAND OFFERS 13 SCHOLARSHIPS

Applications for Wheatland Electric's Empowering the Next Generation Scholarship Program are now available. Wheatland will award 13 \$1,000 scholarships to graduating seniors going on to a post-secondary institution.

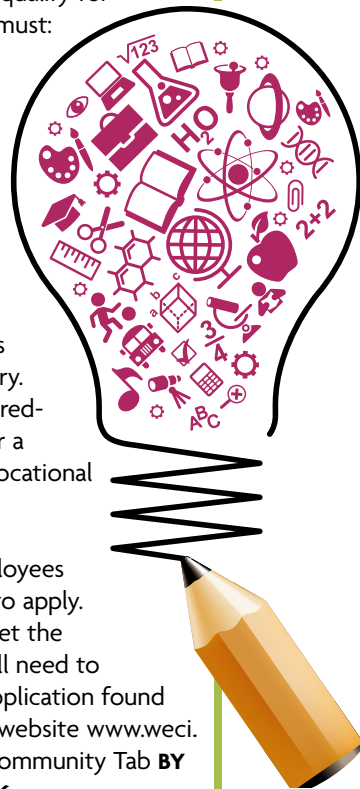
Those who qualify for the scholarship must:

- ▶ Have a parent/guardian who is a member of Wheatland Electric.
- ▶ Attend one of the 13 high schools in Wheatland's service territory.
- ▶ Attend an accredited college or a technical or vocational school.

Children of Wheatland employees are not eligible to apply. Seniors who meet the qualifications will need to complete the application found on Wheatland's website [www.weci.net](http://www.weci.net) under the Community Tab **BY FEBRUARY 1, 2016.**

A committee will then choose the winning applicant from each school, and the scholarships will be awarded at the Annual Meeting in April 2016.

**APPLICATION DEADLINE FEB. 1, 2016**



## Get to Know Your Co-op Staff

### Paul Aguiniga

Warehouseman  
in Garden City  
8 Years at Wheatland



Paul Aguiniga

**TELL US ABOUT YOUR FAMILY.** I have a wonderful wife who I have been with for 30 years now. I am currently supporting her dream to be a Dental Hygienist. She is a student at Colby Community College for the next two years. We

have five children, three girls and two boys from ages 16 to 29, as well as one grandchild with another one on the way.

**WHERE ARE YOU FROM ORIGINALLY?**  
Colorado

**WHAT DO YOU LIKE TO DO IN YOUR SPARE TIME?** Watch and play sports and spend time with my wife and family.

**WHAT SPORT OR TEAM IS YOUR FAVORITE?** The Denver Broncos!

**IF YOU COULD HAVE ANY SUPER POWER –WHAT WOULD IT BE AND WHY?** It would be to brain cleanse people. I would get all the brain-washed Kansas City Chiefs fans who are brain-washed into thinking the “chefs” are a good team and that they will win a Superbowl one day. I would wash all that out of their minds and bring them back to reality that it is all a lie and will never happen.

**WHAT IS YOUR FAVORITE MOVIE?** “A Christmas Story,” just an all-time classic that I can watch all the time.

**WHO HAS INSPIRED YOU IN YOUR LIFE AND WHY?** That would be my wife. To see her work as a full-time employee, full-time wife and mother and then attend school part-time to work on her degree for three years and now being a full-time student for the next two-years to achieve her dream.

# Syracuse Remodel, Harper Construction Update



Wheatland employees were on hand for the official re-opening of the remodeled Syracuse office in October.

Wheatland recently re-opened the Syracuse business office after an extensive remodel. Since July, the business office has been operating out of a temporary trailer at the warehouse facility on S. Barber St. while the office on Main Street was completely gutted and redone.

“It’s beautiful! I almost thought I was in the wrong building when I walked in,” said Jamie Coleman, Syracuse Consumer Service Representative.

As well as the two consumer service representative work stations, an updated kitchen, ADA compliant bathroom facilities and a new meeting room were part of the remodel. The outside was even updated with a little stucco, awning and new sign.

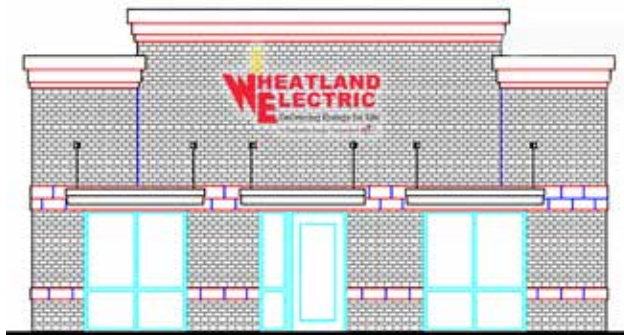


Syracuse office improvements include a meeting room.

An open house was hosted at the new facility in October along with a “Cram the Van” event. Members enjoyed the opportunity to get their first peek at the complete makeover and were complimentary of the long-overdue upgrades.

In Harper, construction of the new office is progressing well. The exterior of the building is up and mostly bricked.

Interior finish work is underway with most of the drywall in place. The new office is set to open in January 2016 and will feature a drive-through for members’ convenience.



Construction is on target for a January 2016 opening at the Harper office. Above is an artist’s rendering of the new Harper office.